

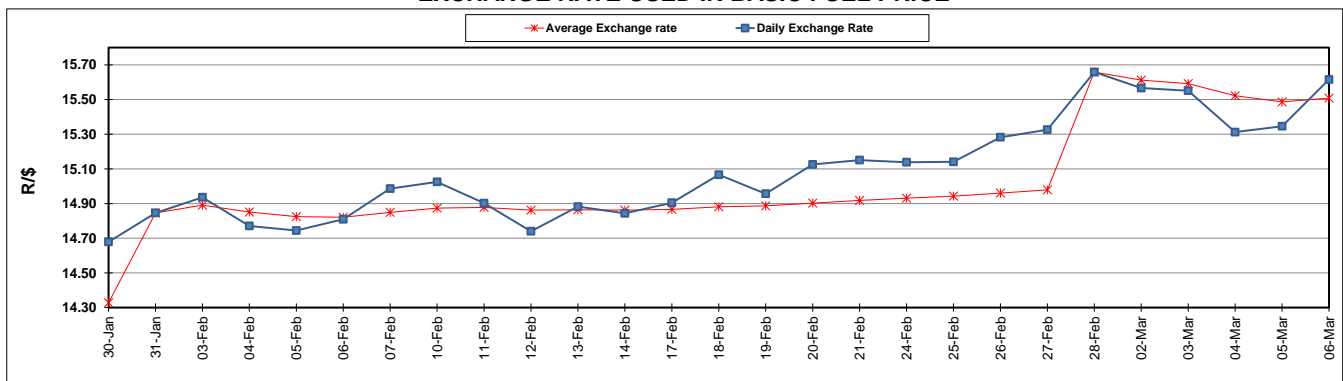
	PETROL 95 ULP	PETROL 93 ULP & LRP	DIESEL 0.05%	DIESEL 0.005%	ILL. PAR.
GAUTENG PUMP PRICE (SA c/l) AS FROM 04/03/2020	1,584.000	1,552.000	-	-	-
WHOLESALE PRICE (SA c/l) AS FROM 04/03/2020	-	-	1,403.260	1,408.660	856.728
SINGLE NATIONAL MAXIMUM RETAIL PRICE	-	-	-	-	1,085.000
BASIC FUEL PRICE - 06/03/2020 (SA c/l)	590.470	578.486	598.231	602.221	580.151
PRESS RELEASE CONTRIBUTION TO BFP 04/03/2020 - 06/03/2020 (SA c/l)	667.970	645.970	683.630	689.030	666.128
UNIT OVER/(UNDER) RECOVERY - 06/03/2020 (SA c/l)	77.500	67.484	85.399	86.809	85.977
AVERAGE BASIC FUEL PRICE 28/02/2020 - 06/03/2020	613.063	600.926	632.578	636.761	612.532
AVERAGE UNIT OVER/(UNDER) RECOVERY 28/02/2020 - 06/03/2020	64.407	54.544	78.052	79.269	87.596

ANALYSIS MOVEMENT OF AVERAGE OVER/(UNDER) RECOVERY

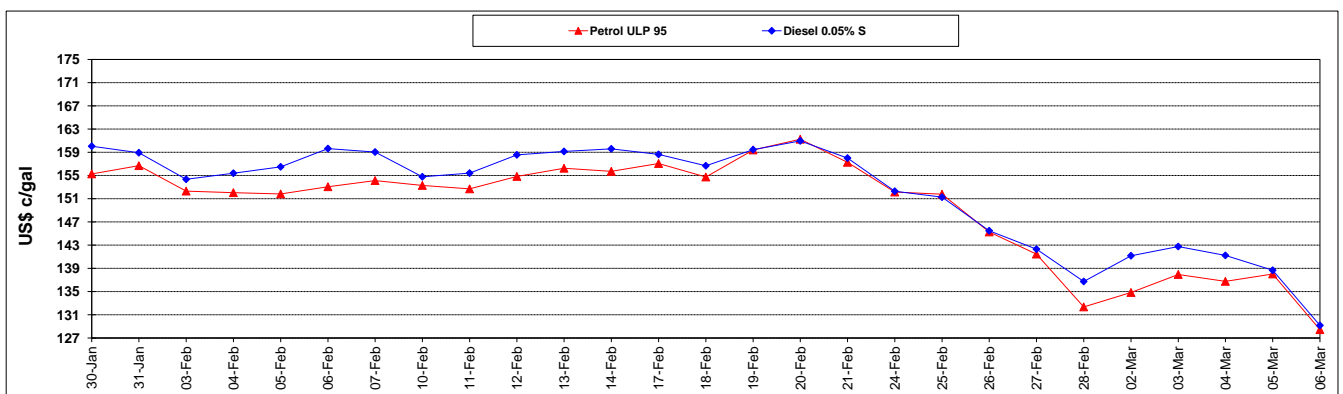
	PETROL 95	PETROL 93	DIESEL 0.05%	DIESEL 0.005%	ILL. PAR.
- MOVEMENT IN INTERNATIONAL PRODUCT PRICES	85.335	75.058	99.646	101.006	108.506
- MOVEMENT IN EXCHANGE RATE	(20.928)	(20.514)	(21.594)	(21.737)	(20.910)
AVERAGE UNIT OVER/(UNDER) RECOVERY 28/02/2020 - 06/03/2020	64.407	54.544	78.052	79.269	87.596

R/\$ EXCHANGE RATE - (R/\$ 15.6156 - 06/03/2020)

EXCHANGE RATE USED IN BASIC FUEL PRICE



INTERNATIONAL PRODUCT PRICES OF BASKET USED IN BASIC FUEL PRICE



BASIC FUEL PRICE IN SA CENTS PER LITRE

